



GAT MONTHLY MEMBERSHIP PROGRESS REPORT

Results as of: 6/30/2023

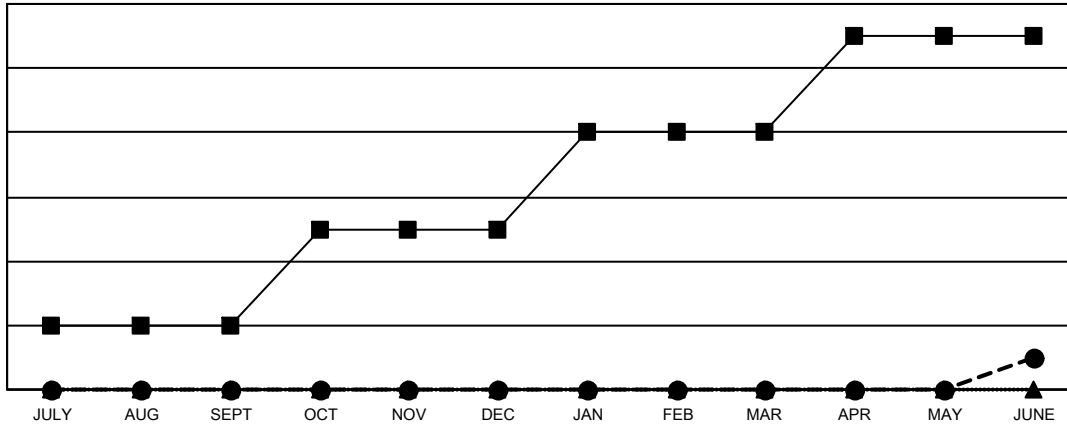
Multiple District 31

LOCATION: NORTH CAROLINA

Clubs			
RESULTS FOR 2022-2023			
QUARTER	NEW CLUB GOAL	NEW CLUBS	DROPPED CLUBS
JULY/AUG/SEPT	2	0	2
OCT/NOV/DEC	3	0	4
JAN/FEB/MAR	3	0	1
APR/MAY/JUNE	3	1	2

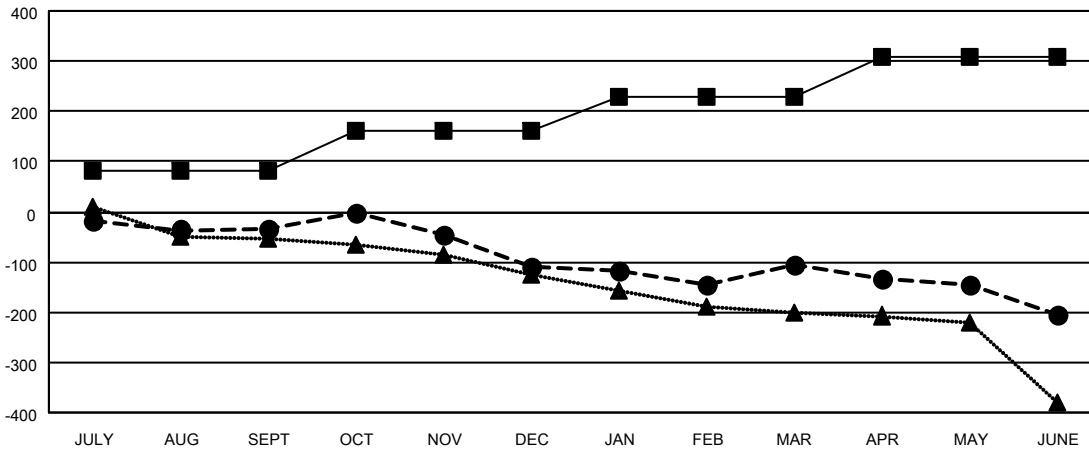
Members			
RESULTS FOR 2022-2023			
QUARTER	MEMBER GROWTH NET GOAL	MEMBER GROWTH ACTUAL	DROPPED MEMBERS ACTUAL (including transfers)
JULY/AUG/SEPT	82	102	127
OCT/NOV/DEC	80	112	181
JAN/FEB/MAR	67	169	158
APR/MAY/JUNE	80	162	231

GOALS AND ACTUAL NEW CLUBS CUMULATIVE



- - CURRENT YEAR GOALS FOR NEW CLUBS
- - CURRENT YEAR ACTUAL NEW CLUBS
- ▲ - LAST YEAR ACTUAL NEW CLUBS

GOALS AND ACTUAL MEMBERS CUMULATIVE



- - MEMBER GROWTH NET GOAL
- - MEMBER GROWTH ACTUAL
- ▲ - LAST YEAR MEMBERSHIP ACTUAL

DROPPED CLUBS: 9	137 CLUBS OF 250 ADDED 1 OR MORE NEW MEMBERS	GENDER DISTRIBUTION
DROPPED MEMBERS	CLICK HERE FOR CUMULATIVE MEMBERSHIP DATA	MALE 2,956 (65.49%)
DECEASED 106		FEMALE 1,558 (34.51%)
CLUB CANCELLED 71		NON BINARY 0 (0.00%)
OTHER 520		PREFER NOT TO ANSWER 0 (0.00%)
TOTAL 697		TOTAL FAMILY UNIT MEMBERS 1,037
		FAMILY MEMBERS PAYING HALF DUES 533